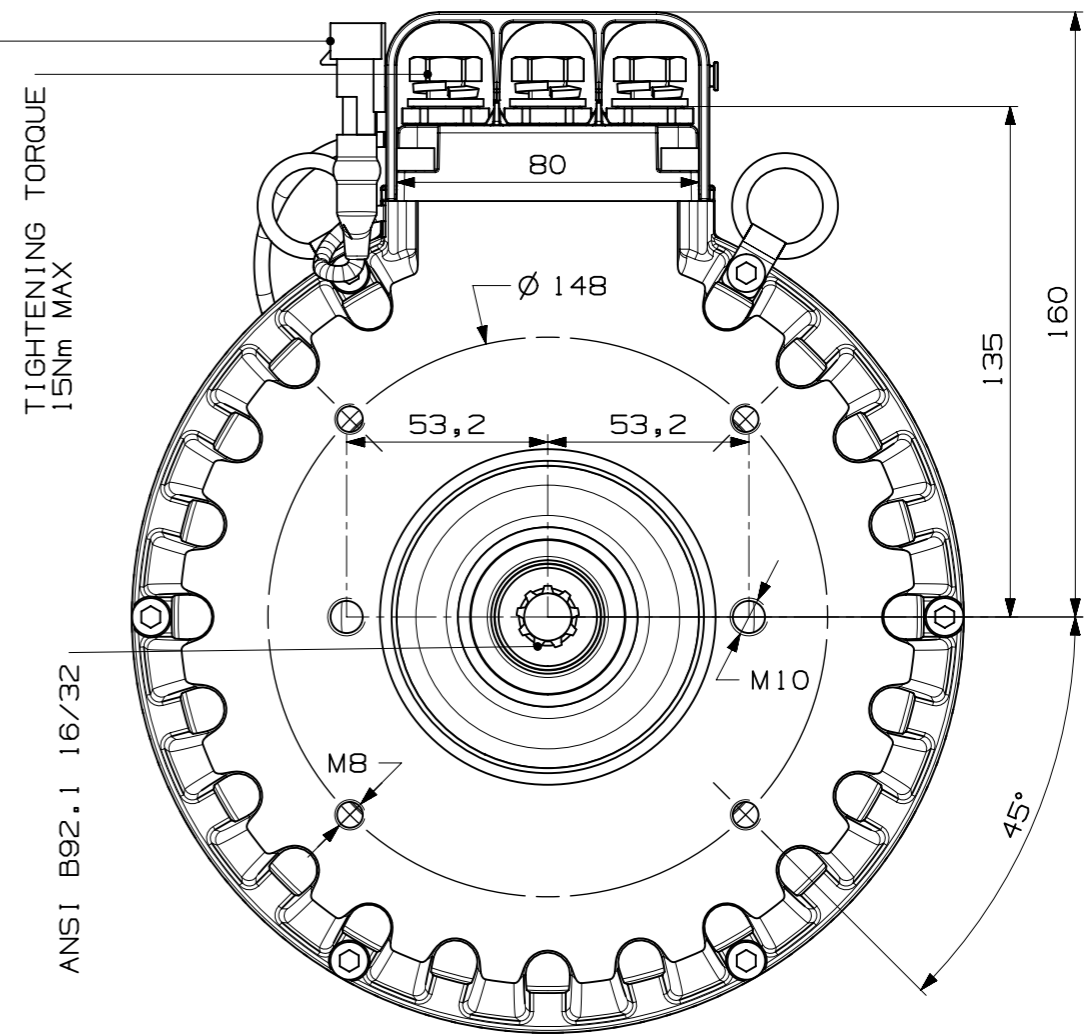


ENCODER CONNECTOR TYPE AMP SUPERSEAL 4 POSITIONS

THERMAL DRILL CONNECTOR TYPE AMP SUPERSEAL 2 POSITIONS



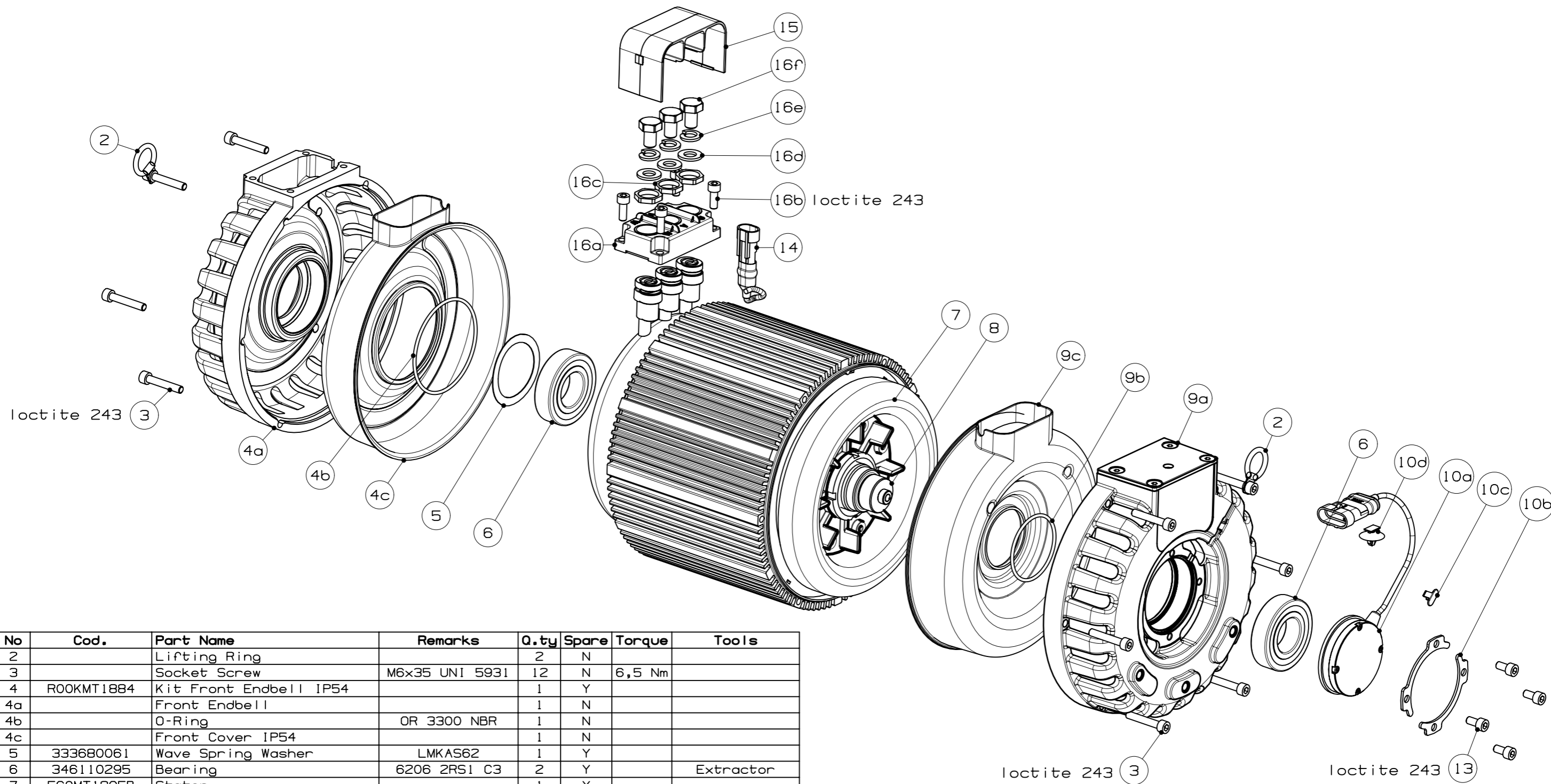
RATING DATA ACCORDING TO EN60034-1	
POWER	16,5 kW
VOLTAGE	54,6 V
CURRENT	233 A
RATED SPEED	2000 RPM
MAXIMUM SPEED	6000 RPM
FREQUENCY	66,7 Hz
Cos φ	0,83
SERVICE	S3 15%
INSULATION CLASS	F
PROTECTION DEGREE	IP 54
BEARINGS	6206 2RS
WEIGHT	42 Kg

FLAT ROOT SIDE FIT STANDARD : ANSI B92.1 TOLERANCE CLASS 5	
NUMBER OF TEETH	9
PRESSURE ANGLE	30°
NOR DIAMETRAL PITCH	16/32
PITCH DIAMETER	14.287
BASE DIAMETER	12,373
FORM DIAMETER	15,977
MAJOR DIAMETER	16,535
MINOR DIAMETER	12,903
MIN EFF CIRCULAR TOOTH	2,494
MAX ACTUAL CIRCULAR TOOTH	2,560
MAX MEAS BETWEEN PIN	10,046
MEAS PIN DIA	2,743

COMPONENT	CODE
ROTOR	MT1882B
STATOR	MT1895B
WINDING	MT1896B
FRONT COVER	MT1884B
REAR COVER	MT615B

POSITION SENSOR	
PIN 1	VCC
PIN 2	SINE
PIN 3	COSINE
PIN 4	GND

1	2nd GEN. LAMINATION UPDATE	27/02/20	Tonin
Rev.	Modification	Date	Signature
	Scale: 1:2		
		Product Code: BO0MT1881B01 Product Description: SRI150-12T80/54 SAE A 9Z	THIS DRAWING IS OUR EXCLUSIVE PROPERTY. IT CAN NOT BE COPIED, REPRODUCED, TRANSMITTED TO OTHER PEOPLE OR USED IN ANY WAY WITHOUT OUR CONSENT. ANY INFRINGEMENT WILL BE LEGALLY PURSUED.
Drawn: Tonin Approved: A.C. Date: 20/02/19	Substituted Product Code Drawing Code: MT1881B/1	Sheet 1 of 2	



No	Cod.	Part Name	Remarks	Q.ty	Spare	Torque	Tools
2		Lifting Ring		2	N		
3		Socket Screw	M6x35 UNI 5931	12	N	6,5 Nm	
4	ROOKMT1884	Kit Front Endbell IP54		1	Y		
4a		Front Endbell		1	N		
4b		O-Ring	OR 3300 NBR	1	N		
4c		Front Cover IP54		1	N		
5	333680061	Wave Spring Washer	LMKAS62	1	Y		
6	346110295	Bearing	6206 2RS1 C3	2	Y		Extractor
7	E60MT1895B	Stator		1	Y		
8	E60MT1882B	Rotor		1	Y		
9	ROOKMT615	Kit Rear Endbell IP54		1	Y		
9a		Rear Endbell		1	N		
9b		O-Ring	OR 3200 VITON	1	N		
9c		Rear Cover IP54		1	N		
10	ROOKMT040	Kit Position Sensor		1	Y		
10a		Position Sensor		1	N		
10b		Locking Flange		2	N		
10c		Fastener		1	N		
10d		Fastener		1	N		
13		Socket Screw	M6x12 UNI 5931	4	N	6,5 Nm	
14	E96CMT1214A00	Thermal Drill		1	Y		
15	768MT397A	Terminal Board Protection		1	Y		
16	ROOKMT024	Kit Terminal Board		1	Y		
16a		Terminal Board		1	N		
16b		Socket Screw	M6x16 UNI 5931	4	N	4 Nm	
16c		Ring Nut	M18x1,5	3	N	17 Nm	Special Wrench
16d		Washer	Ø 10 UNI 6592	3	N		
16e		Spring Washer	Ø 10 UNI 1751	3	N		
16f		Hexagonal Screw	M10x16 UNI 5739	3	N	15 Nm	

1	2nd GEN. LAMINATION UPDATE		27/02/20	Tonin																																				
Rev.	Modification			Date	Signature																																			
	Scale:	<table border="1"> <tr> <td>MEDIUM LIMIT OF ACCURACY</td> <td>UP TO 6</td> <td>BESIDES 6 UP TO 30</td> <td>BESIDES 30 UP TO 120</td> <td>BESIDES 120 UP TO 315</td> <td>BESIDES 315 UP TO 1000</td> <td>BESIDES 1000 UP TO 2000</td> <td>BESIDES 2000 UP TO 4000</td> <td>UP TO 10'</td> <td>BESIDES 10' UP TO 50'</td> <td>BESIDES 50' UP TO 120'</td> <td>BESIDES 120' UP TO 400'</td> </tr> <tr> <td>DEVIATION</td> <td>±0,1</td> <td>±0,2</td> <td>±0,3</td> <td>±0,5</td> <td>±0,8</td> <td>±1,2</td> <td>±2</td> <td>±1"</td> <td>±0° 30'</td> <td>±0° 20'</td> <td>±0° 10'</td> </tr> <tr> <td>TOLERANCE</td> <td>0,2</td> <td>0,4</td> <td>0,6</td> <td>1</td> <td>1,6</td> <td>2,4</td> <td>4</td> <td>2"</td> <td>1°</td> <td>0° 40'</td> <td>0° 20'</td> </tr> </table>	MEDIUM LIMIT OF ACCURACY	UP TO 6	BESIDES 6 UP TO 30	BESIDES 30 UP TO 120	BESIDES 120 UP TO 315	BESIDES 315 UP TO 1000	BESIDES 1000 UP TO 2000	BESIDES 2000 UP TO 4000	UP TO 10'	BESIDES 10' UP TO 50'	BESIDES 50' UP TO 120'	BESIDES 120' UP TO 400'	DEVIATION	±0,1	±0,2	±0,3	±0,5	±0,8	±1,2	±2	±1"	±0° 30'	±0° 20'	±0° 10'	TOLERANCE	0,2	0,4	0,6	1	1,6	2,4	4	2"	1°	0° 40'	0° 20'		THIS DRAWING IS OUR EXCLUSIVE PROPERTY. IT CAN NOT BE COPIED, REPRODUCED, TRANSMITTED TO OTHER PEOPLE OR USED IN ANY WAY WITHOUT OUR CONSENT. ANY INFRINGEMENT WILL BE LEGALLY PURSUED.
	MEDIUM LIMIT OF ACCURACY	UP TO 6	BESIDES 6 UP TO 30	BESIDES 30 UP TO 120	BESIDES 120 UP TO 315	BESIDES 315 UP TO 1000	BESIDES 1000 UP TO 2000	BESIDES 2000 UP TO 4000	UP TO 10'	BESIDES 10' UP TO 50'	BESIDES 50' UP TO 120'	BESIDES 120' UP TO 400'																												
DEVIATION	±0,1	±0,2	±0,3	±0,5	±0,8	±1,2	±2	±1"	±0° 30'	±0° 20'	±0° 10'																													
TOLERANCE	0,2	0,4	0,6	1	1,6	2,4	4	2"	1°	0° 40'	0° 20'																													
1:2	DRAWN WITH CAD HANDLING ON CAD SYSTEM ONLY																																							
	Product Code	Product Description																																						
	Drawn	Tonin	BO0MT1881B01	SRI150-12T80/54 SAE A 9Z																																				
	Approved	A.C.	Substitute Product Code	Drawing Code																																				
Date	20/02/19		MT1881B/1	Sheet 2 of 2																																				